

PUBLISHED MARCH 2023



SIGNAGE CATALOGUE 2023



“ Here at CDP we pride ourselves on quality service, products and after care. Our signage department has gone from strength to strength in recent years, and I am really proud to not only be a part of it, but to be leading the way in taking us forward as we evolve and grow our offerings in all aspects of design, manufacture and installations. ”

Stephen Gibson

Signage Manager

stephen@cdp.co.uk
Mob: 07415 646 609
Office: 0151 724 7000

This signage catalogue consists of the most popular signage for new housing developments, show homes/marketing suites and internal offices. We have the ability to produce all types of signage and pride ourselves on our flexibility and constant innovative way of thinking. If you wish to discuss some signage that is not listed within this catalogue, please do not hesitate to do so.

We will conduct an annual review of the contents within this catalogue and will always continue to evolve and grow.

If you wish to seek further support for your signage requirements, please contact Stephen Gibson or a member of the team on the contact details listed below and we will be delighted to assist and support you.

Site surveys, expert advice, artwork and design, nationwide production and installation and excellent aftercare are all part of our offering as standard. We are certain you will be choosing the right supplier by working with CDP.



AA Directional Signs	01	Magnetic Signs	20
Acrylic House Plaques	02	Mini Picket Signs	21
Brushed Building Lettering	03	Monolith Sign	22
Cube Totem Sign	04	Pavement Signs	23
Decorative Frosting	05	Post & Panel Signs	24
Development Stack Signs	06	Projecting Signs	25
Development V-Stack Signs	07	PVC Banner	26
Fence/Railing Signs	08	Rigid Steel Flagpoles 6M	27
Flagpoles 6M	09	Site Container Signs	28
For Sale Signs	10	Site Safety Signs	29
Heras Fence Banner	11	Small Hoarding Board	30
Internal House Plaque	12	Super Large Mesh Banner	31
Internal Tension Fabric System	13	Super Large Tension Banner System	32
Internal Wall Wrap	14	Tension Banner System	33
Internal Wayfinding Sign	15	Tray Stack Signs	34
Internal Window Clock Sign	16	Vehicle Graphics	35
Internal Window Sign	17	Wall Mounted Tray Sign	36
Large Hoarding Board	18	Window Vinyls	37
Low Level Leaderboard Signs	19		



AA DIRECTIONAL SIGNS

Substrate: Solid 3mm Aluminium Composite

Corners: Radius

Edges: Trimmed

Vinyl Print: Full Colour UV MD3-AB With Matt Laminate

Fixings: Rear Channel & Universal Bands With Jubilee Clips

Optional Premium Extras: 3D Acrylic Overlays - Google Sign Location Plan

Available Sizes:

1000mm x 300mm - Product Code **001-A**



Rear Channel



Universal Band & Jubilee Clip



ACRYLIC HOUSE PLAQUES

Substrate: 5mm Clear Acrylic

Corners: Radius

Edges: Polished

Direct Board Print: Full Colour Reverse, Backed in White Ink

Fixings: 19mm Satin Locators

Optional Premium Extras: 3D Acrylic Overlays - 10mm/20mm Acrylic
Black, Satin, Chrome or Gold Fixings

Available Sizes:

A5 (148mm x 210mm) - Product Code **002-A**

A4 (210mm x 297mm) - Product Code **002-B**

A3 (297mm x 420mm) - Product Code **002-C**

A2 (420mm x 594mm) - Product Code **002-D**



Black, Satin, Chrome or Gold Fixings



3D Acrylic Overlays



BRUSHED BUILDING LETTERING

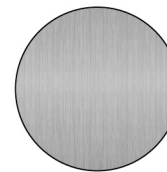
Substrate: 3mm Brushed Aluminium Composite

Fixings: VHB Bonding Tape & CT1 Glue **OR** Large Offset Locators

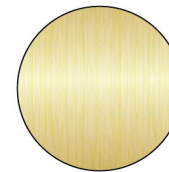
Optional Premium Extras: Bespoke Printed Vinyl Face
0mm/20mm Acrylic3D Stainless Steel or Aluminium

Available Sizes:

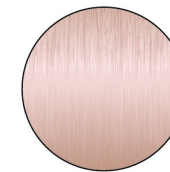
Bespoke, Subject to Survey - Product Code **003-X**



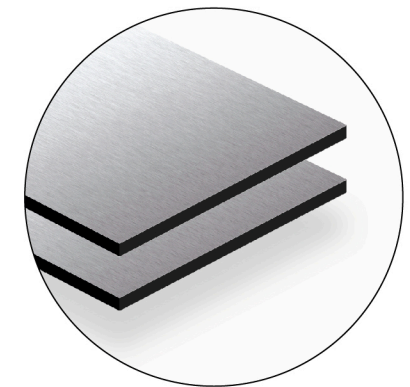
Silver



Gold



Rose Gold



3mm Brushed Aluminium Composite



LED Illuminated Elements



3D Acrylic Overlays



CUBE TOTEM SIGN

Substrate: Solid 3mm Aluminium Composite

Edges: Wrapped

Vinyl Print: Full Colour UV MD3-AB With Matt Laminate

Internal Frame: 75mm x 75mm x 3mm Steel Box Section Post With 10mm Foamex Squares

Fixings: Colour Matching Rivets

Optional Premium Extras: 3D Acrylic Overlays - Timber Base Frame & Golden Stone - LED Illuminated Elements

Available Sizes:

500mm x 500mm x 2000mm - Product Code **004-A**

500mm x 500mm x 3000mm - Product Code **004-B**



DECORATIVE FROSTING

Vinyl Print: Full Colour Digital M7 Crystal Frosting

Laminate: Matt/Gloss

Glass Preparation: Full Adhesive Removal & Scrape Down

Optional Premium Extras: White or Clear Ink - Cut Elements With Gloss Vinyl Inlays

Available Sizes:

Bespoke, Subject to Survey - Product Code **005-X**



2440mm x 1220mm



1220mm x 2440mm



2440mm x 2440mm



3050mm x 1520mm

DEVELOPMENT STACK SIGNS

Substrate: Solid 3mm Aluminium Composite

Corners: Square

Edges: Wrapped

Vinyl Print: Full Colour UV MD3-AB With Matt Laminate

Post: 114mm x 3mm White Round Aluminium (800mm Underground)

Finishing: 114mm Round White Post Caps

Fixings: Rear Channel & Universal Bands With Jubilee Clips

Sides: Single Sided

Optional Premium Extras: 3D Acrylic Overlays - Bespoke Colour Posts
Doublesided Board

Available Sizes:

2440mm x 1220mm Horizontal - Product Code **006-A**

1220mm x 2440mm Vertical - Product Code **006-B**

2440mm x 2440mm Square - Product Code **006-C**

3050mm x 1520mm Horizontal - Product Code **006-D**

1520mm x 3050mm Vertical - Product Code **006-E**

3050mm x 3050mm Square - Product Code **006-F**



1520mm x 3050mm



3050mm x 3050mm



X2 2440mm x 1220mm



X2 1220mm x 2440mm



X2 2440mm x 2440mm



X2 3050mm x 1520mm

DEVELOPMENT V-STACK SIGNS

Substrate: Solid 3mm Aluminium Composite

Corners: Square

Edges: Wrapped

Vinyl Print: Full Colour UV MD3-AB With Matt Laminate

Post: 114mm x 3mm White Round Aluminium (800mm Underground)

Finishing: 114mm Round White Post Caps

Fixings: Rear Channel & Universal Bands With Jubilee Clips

Optional Premium Extras: 3D Acrylic Overlays - Bespoke Colour Posts
Doublesided Board

Available Sizes:

X2 2440mm x 1220mm Horizontal - Product Code **007-A**

X2 1220mm x 2440mm Vertical - Product Code **007-B**

X2 2440mm x 2440mm Square - Product Code **007-C**

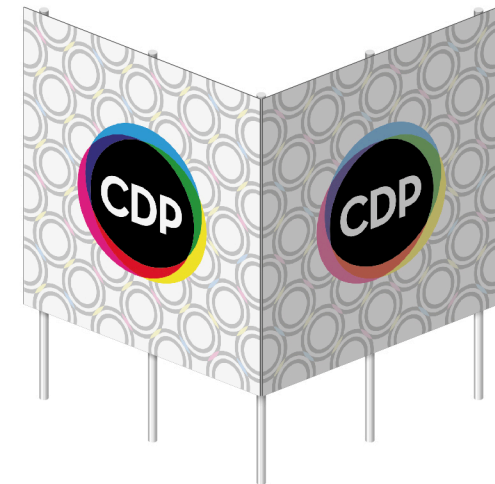
X2 3050mm x 1520mm Horizontal - Product Code **007-D**

X2 1520mm x 3050mm Vertical - Product Code **007-E**

X2 3050mm x 3050mm Square - Product Code **007-F**



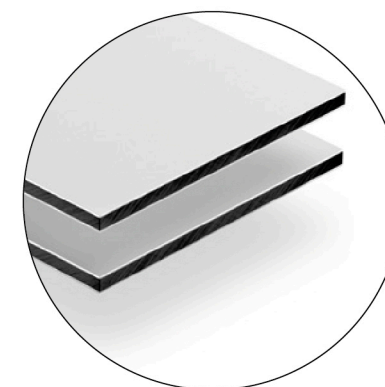
X2 1520mm x 3050mm



X2 3050mm x 3050mm



3D Acrylic Overlays



3mm Aluminum Composite

FENCE/RAILING SIGNS

Substrate: Solid 3mm Aluminium Composite

Corners: Radius

Edges: Trimmed

Vinyl Print: Full Colour UV MD3-AB With Matt Laminate

Fixings: Rear Channel & Railing Clips (Size Unknown? Universal Bands With Jubilee Clips)

Optional Premium Extras: 3D Acrylic Overlays

Available Sizes:

A5 (148mm x 210mm) - Product Code **008-A**

A4 (210mm x 297mm) - Product Code **008-B**

A3 (297mm x 420mm) - Product Code **008-C**

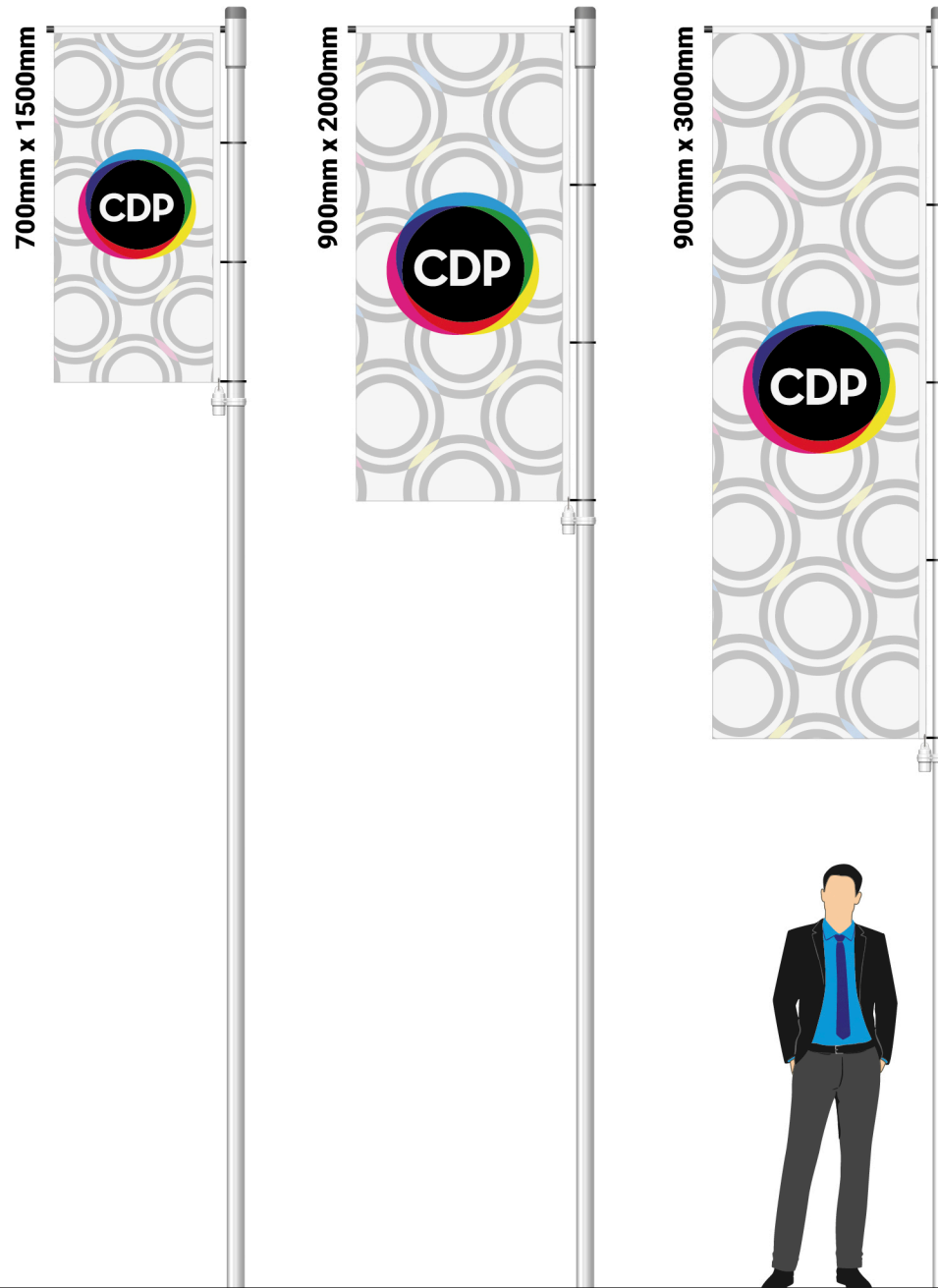
A2 (420mm x 594mm) - Product Code **008-D**



Rear Channel



Railing Clip



FLAGPOLES 6M

Flag Material: Knitted Polyester & Premium Silver Interliner

Fixing Method: 60mm Top Sleeve, Chain Weight, Steel Ground Sleeve & Heavy Duty Ties

Finishing: Standard White Flagpole, Rotating Arm & Top Finial

Sides: Doublesided, Read Correctly From Both Sides

Optional Premium Extras: Bespoke Flagpole Vinyl Wrap

Available Sizes:

700mm x 1500mm - Product Code **009-A**

900mm x 2000mm - Product Code **009-B**

900mm x 3000mm - Product Code **009-C**



FOR SALE SIGNS

Substrate: Solid 3mm Aluminium Composite

Corners: Radius

Edges: Trimmed

Vinyl Print: Full Colour UV MD3-AB With Matt Laminate

Post: 1x 50mm x 50mm x 3mm White 2000mm Aluminium Square (500mm Underground)

Finishing: 1x 50mm x 50mm Square White Cap

Fixings: Colour Matching Rivets Directly Through Face (No Rear Channel Required)

Sides: Single Sided

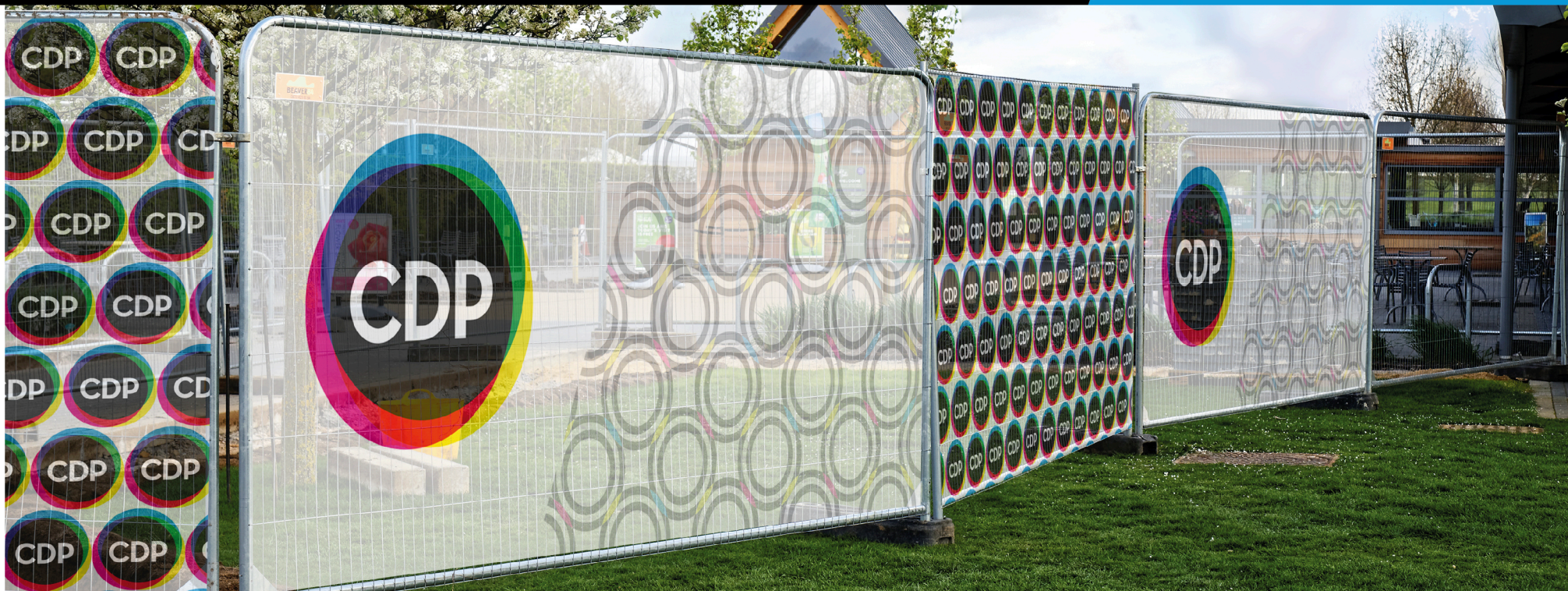
Optional Premium Extras: 3D Acrylic Overlays - Bespoke Colour Post - Doublesided Board

Available Sizes:

A4 (210mm x 297mm) - Product Code **010-A**

A3 (297mm x 420mm) - Product Code **010-B**

A2 (420mm x 594mm) - Product Code **010-C**



HERAS FENCE BANNER

Material: Close Knit Windproof Mesh Banner

Edges: Clear Welded Hems With Eyelets Every 400mm

Print: 16 Pass Vibrant Full Colour UV

Fixings: Heavy Duty Cable Ties

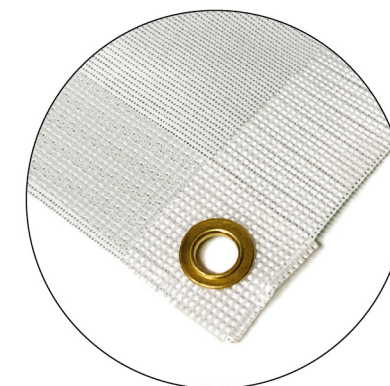
Sides: Single Sided

Optional Premium Extras: 32 Pass Vibrant Full Colour UV Print

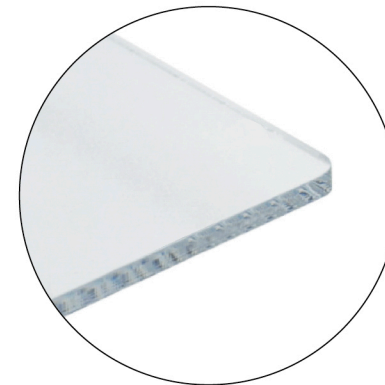
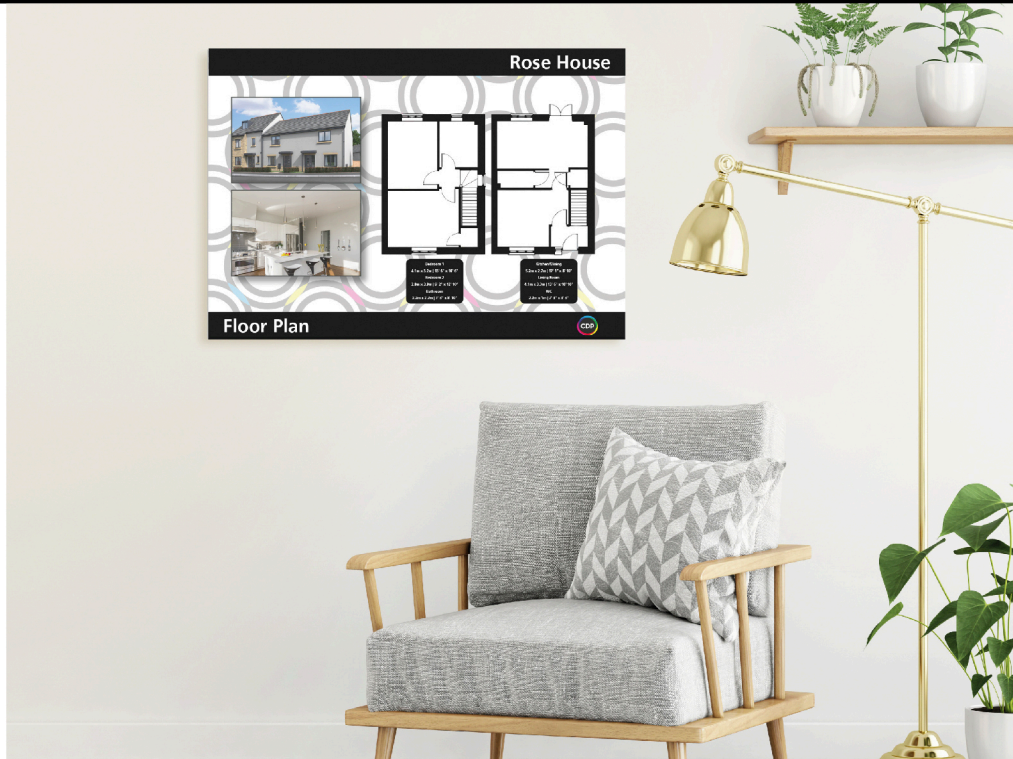
Available Sizes:

3300mm x 1700mm - Product Code **011-A**

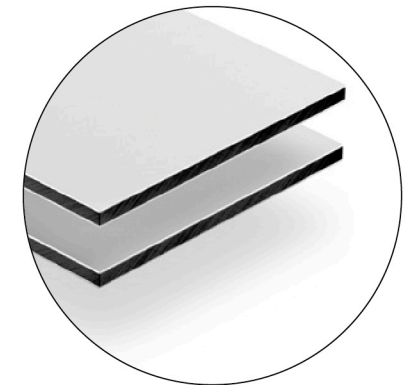
OR Bespoke, Subject to Survey - Product Code **011-X**



Clear Welded Hem With Eyelet



5mm Clear Acrylic



3mm Aluminum Composite

INTERNAL HOUSE PLAQUE

Substrate: 5mm Clear Acrylic, Solid 3mm Aluminium Composite or Budget 5mm Foamex

Corners: Radius

Edges: Polished (Acrylic Option)

Direct Board Print: Full Colour UV (Acrylic Option Backed in White Ink)

Fixings: 19mm Satin Locators **OR** VHB Bonding Tape

Optional Premium Extras: 3D Acrylic Overlays - 10mm/20mm Acrylic
Black, Chrome or Gold Fixings - Brushed Composite Board Direct Print

Available Sizes:

A5 (148mm x 210mm) - Product Code **012-A**

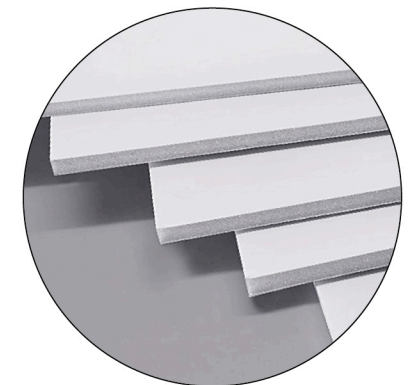
A4 (210mm x 297mm) - Product Code **012-B**

A3 (297mm x 420mm) - Product Code **012-C**

A2 (420mm x 594mm) - Product Code **012-D**



Black, Satin, Chrome or Gold Fixings



5mm Foamex



INTERNAL TENSION FABRIC SYSTEM

Material: Premium Digital Fabric

Frame: Tex-100 (Mill Finish)

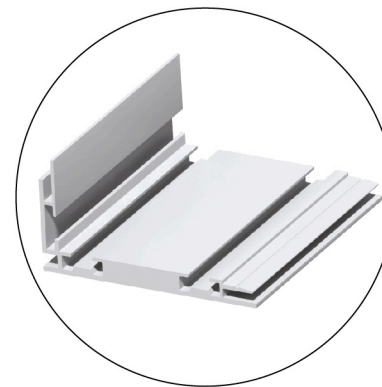
Print: Full Colour UV

Fixings: Wall Plugs, Screws/Caps

Optional Premium Extras: Tex-100 LED Illuminated Light Box (Transformer & Plug Socket Provided) - Bespoke Colour Frame

Available Sizes:

Bespoke, Subject to Survey - Product Code **013-X**



Tex-100 Frame (Mill Finish)



LED Illuminated Light Box



INTERNAL WALL WRAP

Vinyl Print: Full Colour UV MD5-HB With Matt Laminate

Edges: Clear Silicon Sealed

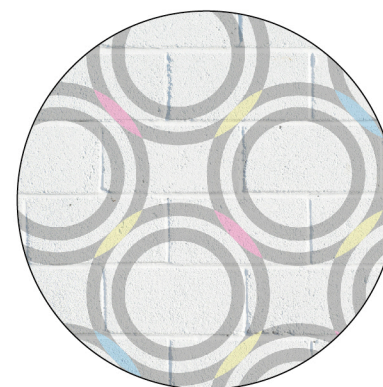
Overlaps/Joins: 10mm

Surface Preparation: Alcohol Spray Wipe Over, Scrape Down & Metamark
Silver Bullet Application

Optional Premium Extras: 3D Acrylic Overlays - Specialist Vinyl Brick/Breeze Block
White or Clear Ink

Available Sizes:

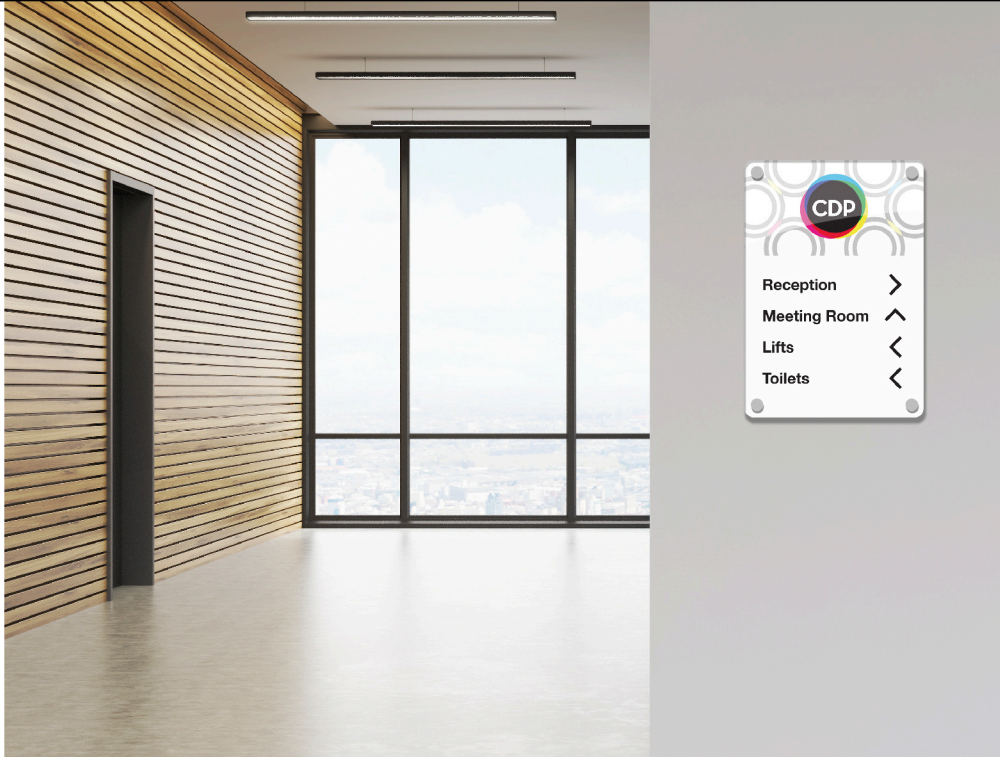
Bespoke, Subject to Survey - Product Code **014-X**



Specialist Vinyl Brick/Breeze Block



3D Acrylic Overlays



Black, Satin, Chrome or Gold Fixings



3D Acrylic Overlays

INTERNAL WAYFINDING SIGN

Substrate: 5mm Clear Acrylic, Solid 3mm Aluminium Composite or Budget 5mm Foamex

Corners: Radius

Edges: Polished (Acrylic Option)

Direct Board Print: Full Colour UV (Acrylic Option Backed in White Ink)

Fixings: 19mm Satin Locators **OR** VHB Bonding Tape

Optional Premium Extras: 3D Acrylic Overlays - 10mm/20mm Acrylic
Black, Chrome or Gold Fixings - Brushed Composite Board Direct Print
CNC Bespoke Board Shape

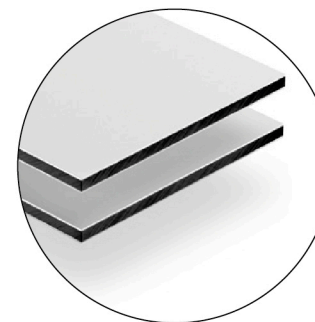
Available Sizes:

A5 (148mm x 210mm - Product Code **015-A**)

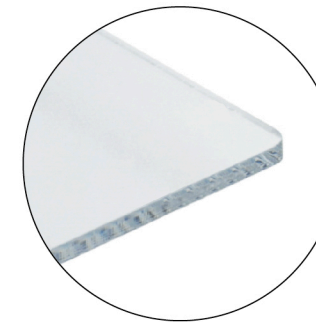
A4 (210mm x 297mm) - Product Code **015-B**

A3 (297mm x 420mm) - Product Code **015-C**

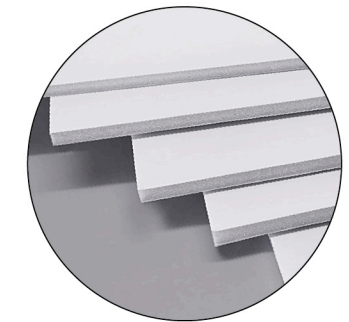
A2 (420mm x 594mm) - Product Code **015-D**



3mm Aluminum Composite



5mm Clear Acrylic



5mm Foamex



INTERNAL WINDOW CLOCK SIGN

Substrate: 3mm Clear Acrylic

Corners: Radius

Edges: Polished

Direct Board Print: Full Colour Reverse, Backed in White Ink

Fixings: Plastic Suction Cups (Including Thread & Nut)

Clock: 80mm Round Quartz

Optional Premium Extras: 3D Acrylic Overlays

Available Sizes:

A4 (210mm x 297mm) - Product Code **016-A**

A3 (297mm x 420mm) - Product Code **016-B**



3D Acrylic Overlays



Plastic Suction Cups



INTERNAL WINDOW SIGN

Substrate: 3mm Clear Acrylic

Corners: Radius

Edges: Polished

Direct Board Print: Full Colour Reverse, Backed in White Ink

Fixings: Plastic Suction Cups (Including Thread & Nut)

Optional Premium Extras: 3D Acrylic Overlays

Available Sizes:

A5 (148mm x 210mm) - Product Code **017-A**

A4 (210mm x 297mm) - Product Code **017-B**

A3 (297mm x 420mm) - Product Code **017-C**

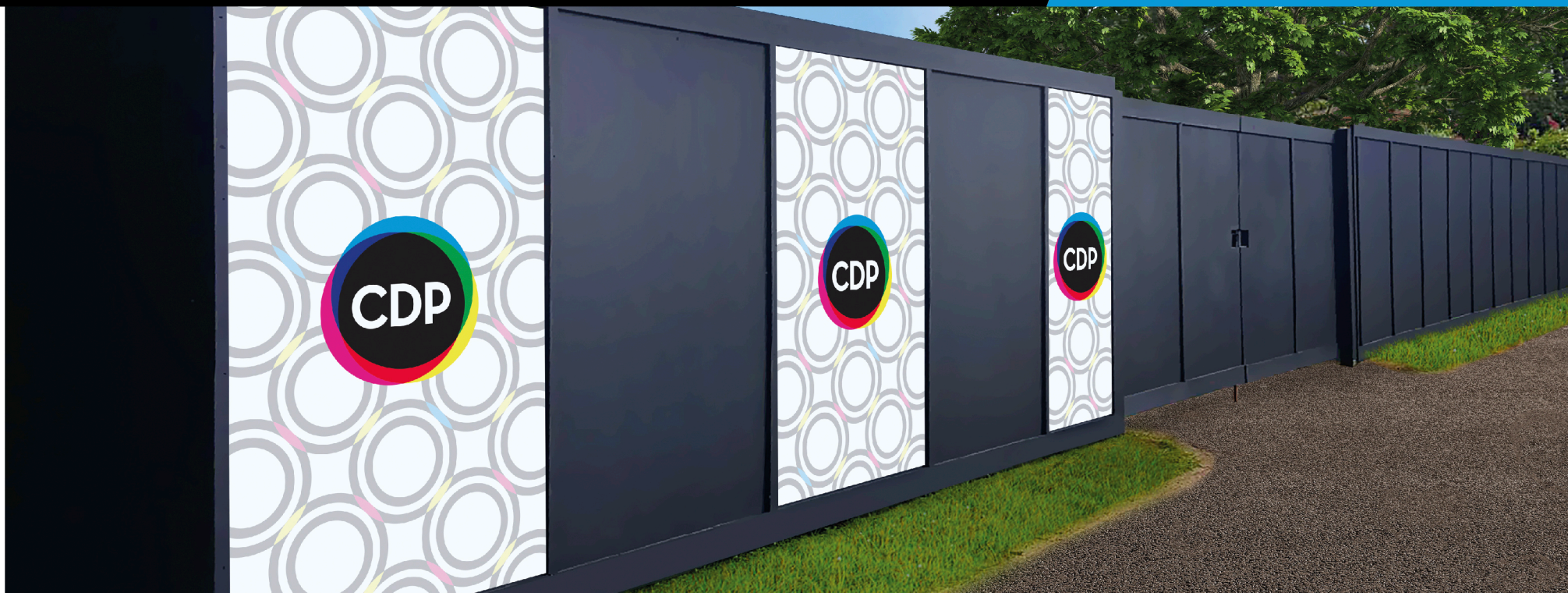
A2 (420mm x 594mm) - Product Code **017-D**



3D Acrylic Overlays



Plastic Suction Cups



LARGE HOARDING BOARD

Substrate: 0.15sk 3mm Aluminium Hoarding Grade Composite

Corners: Square

Edges: Trimmed

Overlaps/Joins: 10mm

Vinyl Print: Full Colour UV MD3-AB With Matt Laminate

Fixings: Screws/Caps

Finishing: 20mm PVC Trim (Vertical Join Covers)

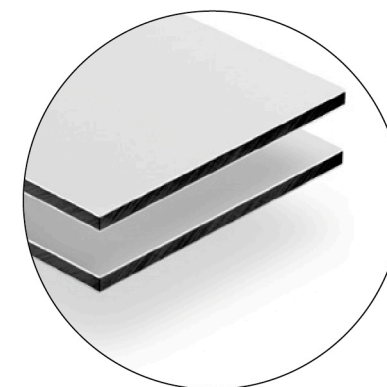
Optional Premium Extras: 3D Acrylic Overlays - White or Clear Ink
Anti-Graffiti Laminate - Bespoke Colour PVC Headers/Footers

Available Sizes:

1220mm x 2440mm - Product Code **018-A**



3D Acrylic Overlays



3mm Aluminum Composite



LOW LEVEL LEADERBOARD SIGNS

Substrate: Solid 3mm Aluminium Composite

Edges: Wrapped

Vinyl Print: Full Colour UV MD3-AB With Matt Laminate

Posts: 2x 50mm x 50mm x 3mm White Aluminium Square (300mm Underground)

Finishing: 2x 50mm x 50mm Square White Caps

Fixings: Colour Matching Rivets (Tech Screws Fixed Through Corner Brackets)

Sides: Single Sided

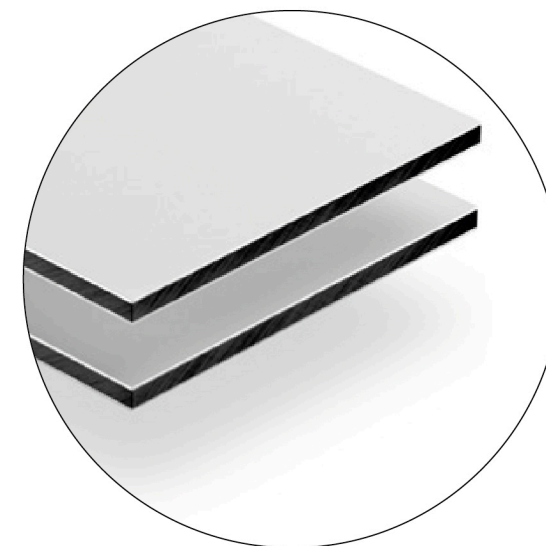
Optional Premium Extras: 3D Acrylic Overlays - Bespoke Colour Posts - Doublesided Tray

Available Sizes:

600mm x 300mm x 50mm (1000mm Posts) - Product Code **019-A**

900mm x 400mm x 50mm (1250mm Posts) - Product Code **019-B**

1000mm x 700mm x 50mm (1500mm Posts) - Product Code **019-C**



3mm Aluminium Composite



3D Acrylic Overlays



MAGNETIC SIGNS

Magnetic signs are a perfect option for dry, flat surfaces when wanting to promote your business. We manufacture high quality UV protected magnets in any size or colour of your choice which may be used for both indoor and outdoor use. We also offer reflective magnets, attracting attention to your sign with its reflective properties at night.

Material: Motorway Grade 0.85mm Magnetic Sheeting
Vinyl Print: Full Colour UV MD3-AB With Matt Laminate
Corners: Radius
Edges: Trimmed
Sides: Single Sided

Optional Premium Extras: CNC Bespoke Shape - White or Clear Ink - Reflective Vinyl

Available Sizes:

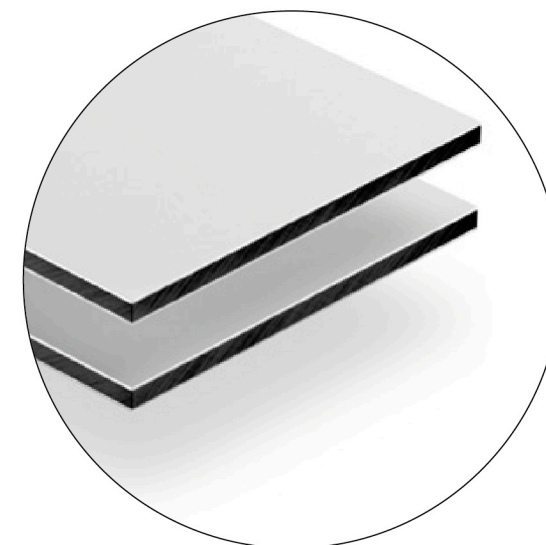
A5 (148mm x 210mm) - Product Code **020-A**

A4 (210mm x 297mm) - Product Code **020-B**

A3 (297mm x 420mm) - Product Code **020-C**

A2 (420mm x 594mm) - Product Code **020-D**

Bespoke Options, Subject to Survey - Product Code **020-X**



3mm Aluminium Composite

MINI PICKET SIGNS

Substrate: Solid 3mm Aluminium Composite

Corners: Radius

Edges: Trimmed

Vinyl Print: Full Colour UV MD3-AB With Matt Laminate

Post: 1x 50mm x 50mm x 3mm White 1000mm Aluminium Square (300mm Underground)

Finishing: 1x 50mm x 50mm Square White Caps

Fixings: Colour Matching Rivets Directly Through Face (No Rear Channel Required)

Sides: Single Sided

Optional Premium Extras: 3D Acrylic Overlays - Bespoke Colour Post - Doublesided Board

Available Sizes:

A4 (210mm x 297mm) - Product Code **021-A**

A3 (297mm x 420mm) - Product Code **021-B**



3D Acrylic Overlays



LED Illuminated Elements



3D Acrylic Overlays



MONOLITH SIGN

Substrate: Solid 3mm Aluminium Composite

Edges: Wrapped

Vinyl Print: Full Colour UV MD3-AB With Matt Laminate

Internal Posts: 2x 75mm x 50mm x 3mm Steel Box Section Posts

Fixings: Colour Matching Rivets

Sides: Doublesided, Read Correctly From Both Sides

Backing Panel: Flat Solid 3mm Aluminium Composite Fixed With Rivets
(Exact Face Size)

Optional Premium Extras: 3D Acrylic Overlays - Timber Base Frame & Golden Stone - LED Illuminated Elements

Available Sizes:

500mm x 1000mm x 75mm - Product Code **022-A**

800mm x 1500mm x 75mm - Product Code **022-B**

1070mm x 2365mm x 75mm - Product Code **022-C**

1375mm x 2975mm x 75mm - Product Code **022-D**



PAVEMENT SIGNS

Base: Heavy Duty Water Base **OR** A-Frame Stand

Print: Waterproof 170gsm PVC

Finishing: Grey & Mill Frame

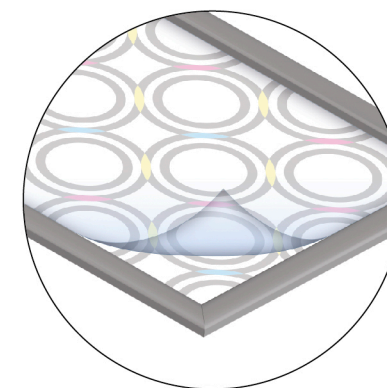
Sides: Doublesided, Read Correctly From Both Sides

Optional Premium Extras: Black or White Frame/Base

Available Sizes:

A1 (594mm x 841mm) - Product Code **023-A**

A0 (841mm x 1189mm) - Product Code **023-B**



Protective Poster Cover



POST & PANEL SIGNS

Substrate: Solid 3mm Aluminium Composite

Corners: Radius

Edges: Trimmed

Vinyl Print: Full Colour UV MD3-AB With Matt Laminate

Post: 1x 50mm x 50mm x 3mm White 1000mm Aluminium Square (Either Welded Base Plate **OR** Larger 1300mm Post 300mm Underground)

Finishing: 1x 50mm x 50mm Square White Caps

Fixings: Rear Channel, 50mm Square Clips & Nuts/Bolts

Sides: Single Sided

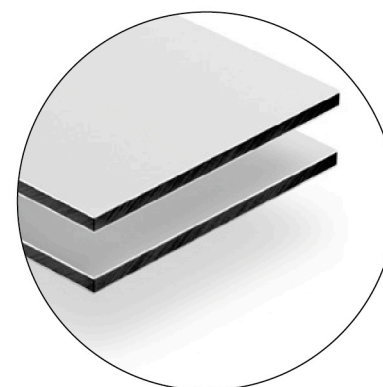
Optional Premium Extras: 3D Acrylic Overlays - Bespoke Colour Post - Doublesided Board

Available Sizes:

A4 (210mm x 297mm) - Product Code **024-A**

A3 (297mm x 420mm) - Product Code **024-B**

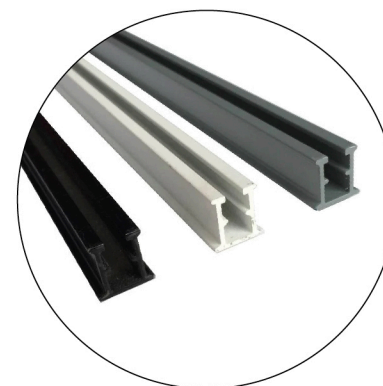
A2 (420mm x 594mm) - Product Code **024-C**



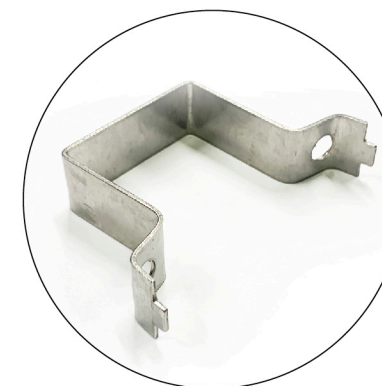
3mm Aluminum Composite



3D Acrylic Overlays



Rear Channel



Square Clips



LED Illuminated Elements



3D Acrylic Overlays

PROJECTING SIGNS

Substrate: Solid 3mm Aluminium Composite

Frame/Arms: 50mm x 50mm x 3mm Steel Box Section

Wall Plates: 150mm x 150mm x 5mm Welded Steel Plate

Vinyl Print: Full Colour UV MD3-AB With Matt Laminate

Board Edges: Wrapped

Finishing: Primer & White/Black Metal Paint

Fixings: Colour Matching Rivets & Concrete Thunderbolts

Sides: Doublesided, Read Correctly From Both Sides

Optional Premium Extras: 3D Acrylic Overlays - Bespoke Frame Vinyl Wrap
LED Illuminated Elements

Available Sizes:

500mm x 3000mm x 50mm - Product Code **025-A**

1000mm x 6000mm x 50mm - Product Code **025-B**

Bespoke Options, Subject to Survey - Product Code **025-X**





PVC BANNER

Material: 510gsm PVC Fabric

Edges: Clear Welded Hems With Eyelets Every 400mm

Print: 16 Pass Vibrant Full Colour UV

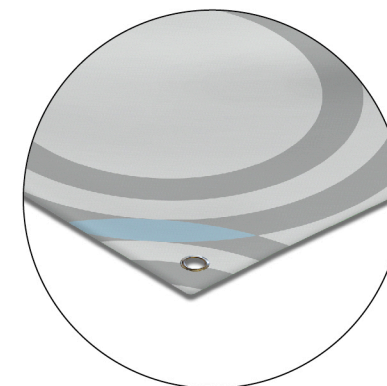
Fixings: Heavy Duty Cable Ties **OR** Screws/Washers

Sides: Single Sided

Optional Premium Extras: 32 Pass Vibrant Full Colour UV Print

Available Sizes:

Bespoke, Subject to Survey - Product Code **026-X**



Hems With Eyelets



Bespoke Flagpole Vinyl Wrap



3D Acrylic Overlays

RIGID STEEL FLAGPOLES 6M

Flagpole: 50mm x 50mm x 3mm Steel Box Section

Banner Frame/Arms: 25mm x 25mm x 3mm Box Section

Banner Flag Substrate: Solid 3mm Aluminium Composite

Vinyl Print: Full Colour UV MD3-AB With Matt Laminate

Finishing: Primer & White/Black Metal Paint

Fixings: Colour Matching Rivets

Sides: Doublesided, Read Correctly From Both Sides

Optional Premium Extras: 3D Acrylic Overlays - Bespoke Flagpole Vinyl Wrap

Available Sizes:

700mm x 1500mm - Product Code **027-A**

900mm x 2000mm - Product Code **027-B**





SITE CONTAINER SIGNS

Substrate: 0.15sk 3mm Aluminium Hoarding Grade Composite

Corners: Square

Direct Board Print: Full Colour UV

Fixings: Screws/Caps

Optional Premium Extras: 3D Acrylic Overlays - White or Clear Ink - Anti-Graffiti Laminate

Available Sizes:

A4 (210mm x 297mm) - Product Code **028-A**

A3 (297mm x 420mm) - Product Code **028-B**

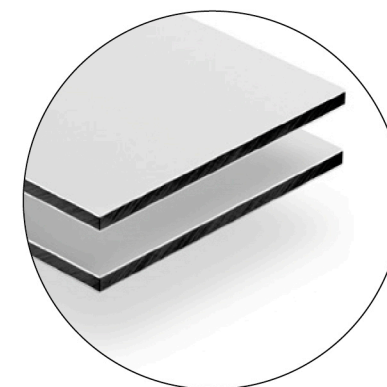
A2 (420mm x 594mm) - Product Code **028-C**

A1 (594mm x 841mm) - Product Code **028-D**

Bespoke Options, Subject to Survey - Product Code **028-X**



3D Acrylic Overlays



3mm Aluminum Composite



SITE SAFETY SIGNS

Substrate: 5mm Foamex

Corners: Radius

Direct Board Print: Full Colour UV

Fixings: Heavy Duty Cable Ties

Optional Premium Extras: Solid 3mm Aluminium Composite - CNC Bespoke Board Shape

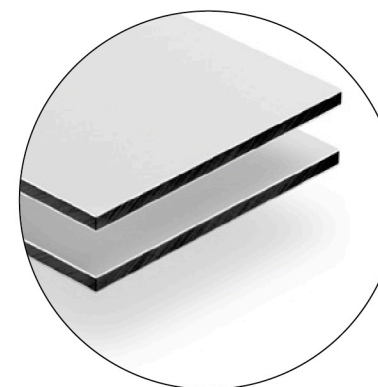
Available Sizes:

A5 (148mm x 210mm) - Product Code **029-A**

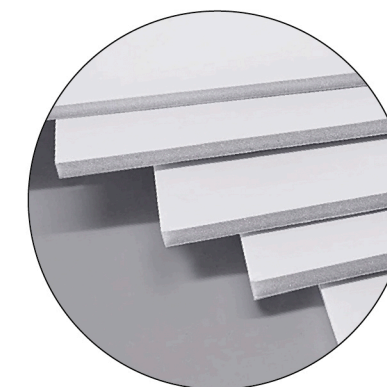
A4 (210mm x 297mm) - Product Code **029-B**

A3 (297mm x 420mm) - Product Code **029-C**

A2 (420mm x 594mm) - Product Code **029-D**



3mm Aluminum Composite



5mm Foamex



SMALL HOARDING BOARD

Substrate: 0.15sk 3mm Aluminium Hoarding Grade Composite

Corners: Square

Direct Board Print: Full Colour UV

Fixings: Screws/Caps

Optional Premium Extras: 3D Acrylic Overlays - White or Clear Ink - Anti-Graffiti Laminate

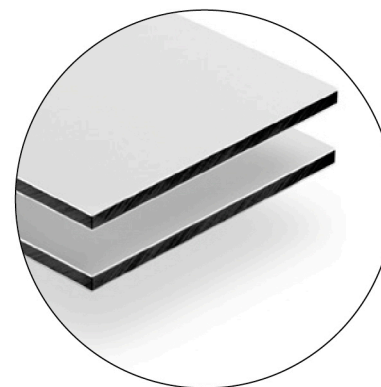
Available Sizes:

A4 (210mm x 297mm) - Product Code **030-A**

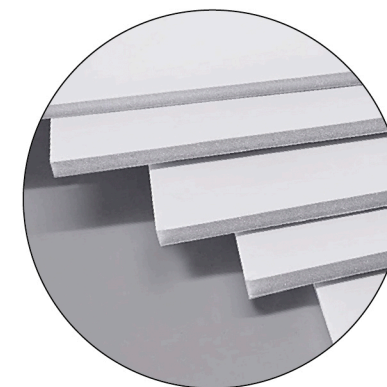
A3 (297mm x 420mm) - Product Code **030-B**

A2 (420mm x 594mm) - Product Code **030-C**

A1 (594mm x 841mm) - Product Code **030-D**



3mm Aluminum Composite



5mm Foamex



SUPER LARGE MESH BANNER

Material: Close Knit Windproof Mesh Banner

Edges: Clear Welded Hems With Eyelets Every 400mm

Print: 16 Pass Vibrant Full Colour UV

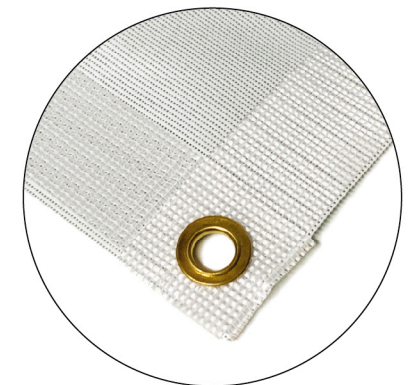
Fixings: Heavy Duty Cable Ties

Sides: Single Sided

Optional Premium Extras: 32 Pass Vibrant Full Colour UV Print

Available Sizes:

Bespoke, Subject to Survey - Product Code **031-X**



Clear Welded Hem With Eyelet



SUPER LARGE TENSION BANNER SYSTEM

Material: Digitally Printed Frontlit PVC (100mm Bleed Required)

Frame: Flex-F2 Frame Mill Finish

Finishing: Grey Tension Strips

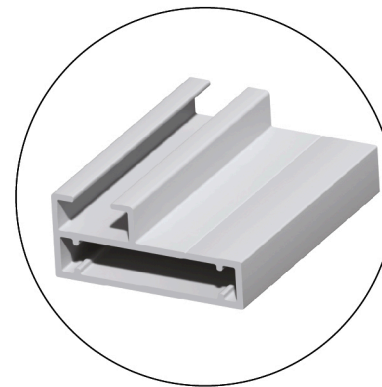
Fixings: Connecting Brackets & Wall/Substrate Fixings

Sides: Single Sided

Optional Premium Extras: Bespoke Colour Frame & Tension Strips
LED Illuminated Light Box

Available Sizes:

Bespoke Options, Subject to Survey - Product Code **032-X**



Flex-F2 Frame Mill Finish



LED Illuminated Light Box



TENSION BANNER SYSTEM

Material: Digitally Printed Frontlit PVC (100mm Bleed Required)

Frame: Flex-F2 Frame Mill Finish

Finishing: Grey Tension Strips

Fixings: Connecting Brackets & Wall/Substrate Fixings

Sides: Single Sided

Optional Premium Extras: Bespoke Colour Frame & Tension Strips

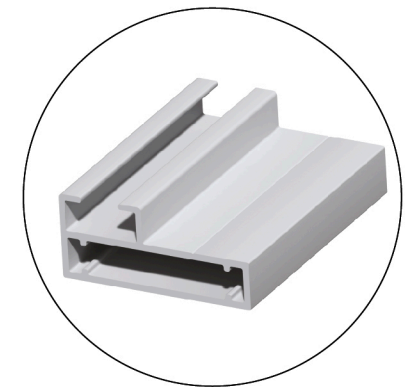
Available Sizes:

10,000mm x 2000mm - Product Code **033-A**

20,000mm x 2000mm - Product Code **033-B**

30,000mm x 2000mm - Product Code **033-C**

Bespoke Options, Subject to Survey - Product Code **033-X**



Flex-F2 Frame Mill Finish



TRAY STACK SIGNS

Substrate: Solid 3mm Aluminium Composite

Corners: Square

Edges: Wrapped

Vinyl Print: Full Colour UV MD3-AB With Matt Laminate

Post: 2x 75mm x 75mm x 3mm White Aluminium Square (800mm Underground)

Finishing: 75mm x 75mm Square White Post Caps

Fixings: Rear Channel & Tech Bolts Fitted Through Returns & Corner Brackets

Sides: Single Sided

Optional Premium Extras: 3D Acrylic Overlays - Bespoke Colour Posts
Doublesided Tray

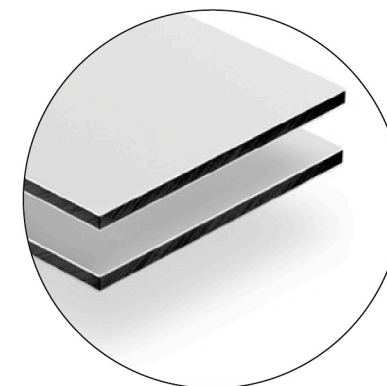
Available Sizes:

1070mm x 2290mm x 75mm - Product Code **034-A**

1375mm x 2900mm x 75mm - Product Code **034-B**



3D Acrylic Overlays



3mm Aluminum Composite



CUT VINYL VEHICLE GRAPHICS

Available in many sizes, designs & colours, our cut vinyl vehicle graphics are a simple yet effective way to get you noticed! We consider the environment too and produce our stickers with an environmentally friendly adhesive material.

Product Code **035-A**



PRINTED PANEL COVERAGE

Our laminated full colour prints are the definitely the premium option when it comes to vehicle advertising. They are produced using a high quality resolution technology making it possible to match the exact design, theme & pantone colour your looking for.

Product Code **035-B**



PARTIAL VAN WRAP

If your looking to separate your business from the competition, a partial wrap will definitely make the difference. We use full size images, bold colours and vibrant designs to create eye-catching, consistent branding which will stay in the minds of your clients. Customising your vehicles will also not reduce resale values as they are fully removable.

Product Code **035-C**



FULL VAN WRAP

The pinnacle of our vehicle branding options, this really is the ideal solution if you are looking to not only protect your full bodywork but to create an incredible visual statement that will take your marketing to another level. Let your ideas, colours & branding flow without limits!

Product Code **035-D**



WALL MOUNTED TRAY SIGN

Substrate: Solid 3mm Aluminium Composite

Corners: Folded & Secured With Aluminium Corner Brackets

Edges: Wrapped

Vinyl Print: Full Colour UV MD3-AB With Matt Laminate

Fixings: Colour Matching Rivets & Aluminium L-Angle Bar

Optional Premium Extras: 3D Acrylic Overlays - Solid 2mm Pure Aluminium LED Illuminated Elements

Available Sizes:

Bespoke Options, Subject to Survey - Product Code **036-X**



3D Acrylic Overlays



Aluminium Corner Brackets



Contravision



Digital Frosting



Full Colour Blockout

WINDOW VINYL

Vinyl Print Options: Contravision, Digital Frosting or Full Colour Blockout

Laminate: Matt/Gloss

Glass Preparation: Full Adhesive Removal & Scrape Down

Optional Premium Extras: White or clear ink

Available Sizes:

Bespoke, Subject to Survey - Product Code **037-X**



“ I love working with Ste and his team, they take all the hassle of signage away and make the process easy. I can always rely on a topquality job and Ste’s ability to constantly beat super-tight deadlines. I would highly recommend CDP’s services.

Jane Reid – Maxwell Hodge Solicitors. ”



“ Ste took a really complex rebrand project on and made my life easy from the very start. His organisation, professionalism and dedication ensured the project went as smooth as it possibly could and we are delighted with the outcome, I wouldn’t trust anybody else with our signage.

Julie Koral – Sanctuary Supported Living. ”



“ As always, Ste and his team did all they could for us to turn this urgent job around in a super tight deadline. There is a reason we rely on CDP and have created such a strong working relationship. I can’t thank Ste and CDP enough for their dedication, professionalism and urgency to always help us out and go the extra mile.

Gill Rycroft – NHS. ”



“ Thank you so much for all your hard work and support this year too (and every year!) I don’t know what we would do without you!

Katie Bennett – Sanctuary ”



SIGNAGE CATALOGUE 2023

PUBLISHED **MARCH 2023**